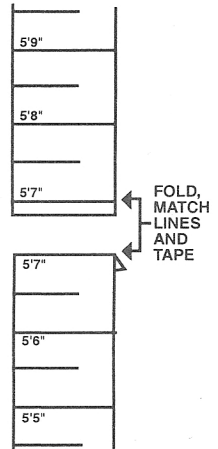


FOLD AND SEAL WITH TAPE

PLACE
STAMP
HERE

DEALER
NAME AND
ADDRESS

INSTRUCTIONS:
Cut both sections of ruler from this form along perforations and tape to wall. Be sure the heavy line is exactly five (5') feet from the floor.



EASY ORDER FINAL CHECKLIST

Check List – Read order form carefully and check each easy to do step to assure they have been completed.

Order blank filled in for gowns

- ☐ Quantity ☐ Style ☐ Color ☐ Material Swatch stapled to order form

Accessories Order

- ☐ Quantity ☐ Style ☐ Color ☐ Material Swatch stapled to order form

Embroidery

- ☐ Initials/ Symbol ☐ Color ☐ Placement

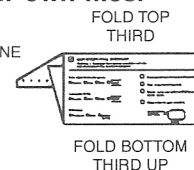
- ☐ Shipping billing information filled in below.

- ☐ Type of payment indicated.

- ☐ Dealer name and address filled in on self-mailer above.

- ☐ Copy made for your own files.

FOLD DOTTED LINE
AND MOISTEN
EDGE TO SEAL



MEASURING GUIDE

To measure from top of head to floor (with shoes on) have choir member back up to this chart. Place a rule level over his head, and record the height on the order blank in the proper column. For women, allow for any difference between heel height when measured and heel height to be worn with robes. The simplest method is to ask each one to stand on toes as tall as she will be in the shoes she will wear.

IMPORTANT:
In order to insure a proper fit, please use and follow our measuring instructions.

Order Today! *Satisfaction Guaranteed*

Method of Payment

- ☐ Check enclosed (if enclosed mail form in envelope)

- ☐ Credit card

Type of Card _____
Account Number _____

- ☐ Dealer Charge
Account Number _____

Authorized Signature _____ Exp. Date _____

Ship to: _____ Bill to: _____

Address: _____ Address: _____

City/State/Zip: _____ City/State/Zip: _____

Phone: _____ Phone: _____

Transportation charges, applicable sales tax or handling charges not included in published prices. Transportation will be billed at time of shipment. For other billing or Credit Card Information, please call your dealer

CUT HERE

5'7"

5'6"

5'5"

5'4"

5'3"

5'2"

5'1"

5'

BE SURE THIS LINE IS
EXACTLY FIVE FEET
FROM THE FLOOR.

4'11"

4'10"

4'9"

FIVE EASY STEPS

TO MEASURE AND ORDER CHOIR GOWNS

By following the 5 easy steps below you can make measurements at your convenience and place your order.

To Order: FOLLOW THESE FIVE EASY STEPS

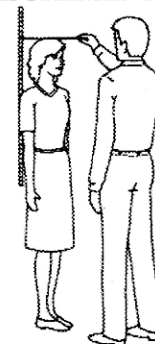
- 1 Select style of gown and accessories.
- 2 Select fabric/color of gown, accessory and trim.
- 3 Select embroidery design/letters and placement of them.
- 4 Follow these three simple measurement steps and record on the measurement form. →
- 5 Fill out easy order form and mail to your local store or catalog house.

HOW TO MEASURE

THREE REQUIRED MEASUREMENTS

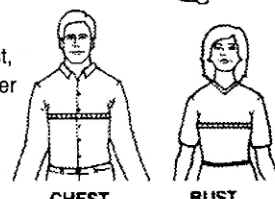
4A. HEIGHTS:

Tape measuring chart to wall (or door). Have individual stand directly in front of chart in shoes with heels against the wall. Place ruler on top of head, parallel with floor, and record measurement.



4B. CHEST or BUST:

Stand naturally. Take measurement over largest portion of chest, up under arms and over shoulder blades in back. Snug, not too tight.



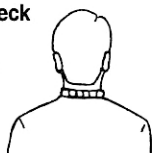
4C. WEIGHT:

OPTIONAL MEASUREMENTS — NEEDED ONLY FOR SOME GOWN STYLES

NECK:

To be used when ordering high neck gowns.

Measure around the base of the neck just above shoulders — then add 1" to your measurements.

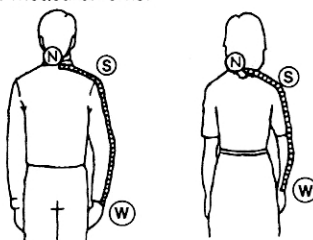


Sleeve lengths are made to an average proportion relative to height.

SLEEVE MEASUREMENT: N-S-W

To be used for persons with special sleeve length requirements.

Leave arm naturally at side. Measure from center point at collar (N) over the top of the shoulder (S), down the arm to the bottom of the wrist (W). Then add 1" to your measurements.



WRIST:

To be used when ordering gowns with cuffs.

Measure circumference of wrist just above hand.



All gowns are finished 6" from the floor unless otherwise specified.

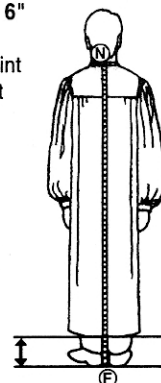
NECK TO FLOOR: N-F

For gowns finished differently than the normal 6" from the floor.

Measure from point (N) (neck bone at base of collar) straight down to the floor. (F).

Please make our gowns

_____ inches above the floor.



EMBROIDERY

Initials/Style _____

Symbol _____

Color of _____

Embroidery _____

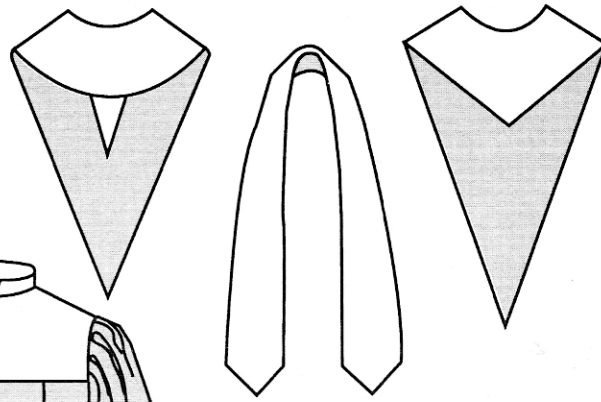
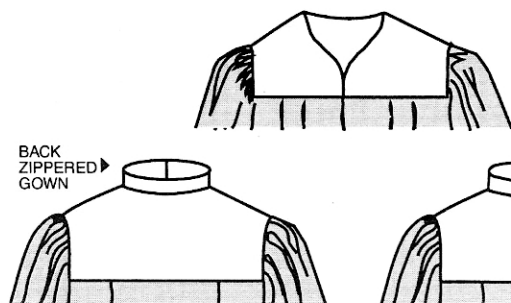
Color of side to be embroidered on reversible stoles _____

PLACEMENT OF EMBROIDERY

NOTE: Two or more initials embroidered on a diagonal must be on wearers right side. If four or more initials are desired, we reserve the right to offer alternative layout and price quotations.

Draw in letters/symbol in appropriate spot.

BACK
ZIPPERED
GOWN



CUT OFF THIS STRIP BEFORE FOLDING AND SEALING
ALSO CUT AND REMOVE RULERS BEFORE FOLDING AND SEALING

MEASUREMENT FORM		THREE REQUIRED MEASUREMENTS			OPTIONAL MEASUREMENTS				ABBOTT HALL OFFICE USE ONLY			
SEX M OR F	FULL NAME/OR GOWN NUMBER	HT. WITH SHOES (4A)	CHEST OR BUST (4B)	WEIGHT (4C)	NECK	WRIST	N-S-W SLEEVE LENGTH	N-F NECK TO FLOOR				
1												6'5"
2												6'4"
3												6'3"
4												
5												
6												6'2"
7												
8												
9												6'1"
10												
11												
12												
13												6'0"
14												
15												
16												5'11"
17												
18												
19												
20												5'10"
21												
22												
23												5'9"
24												
25												
26												
27												5'8"
28												BE SURE TO LINE UP WITH 5'7" ON OTHER SECTION OF RULER.
29												
30												5'7"

ALL CUSTOM ORDERS AND STOCK ITEMS MUST BE ORDERED ON REVERSE SIDE OF THIS FORM

ORDER FORM

CHOIR GOWNS

Please fill out completely.

All items being ordered must be listed on this form.

QUANTITY	STYLE	MATERIAL	MAIN COLOR (Gown)	ACCENT COLOR (Gown)	TRIM COLOR (Cording or Braid)	UNIT PRICE	TOTAL

SLEEVE TREATMENT

Indicate special sleeve for musicians or music directors only; otherwise gowns come with sleeve shown in catalog.

QUANTITY	STYLE	MATERIAL	MAIN COLOR (Gown)	ACCENT COLOR (Gown)	TRIM COLOR (Cording or Braid)	UNIT PRICE	TOTAL

STOLES - TUNICS

QUANTITY	STYLE	MATERIAL	TOP COLOR	BOTTOM COLOR	INITIAL OR SYMBOL	UNIT PRICE	TOTAL

Special Instructions: _____

EMBROIDERY/INITIALS or SYMBOL - Indicate placement on diagrams on other side

QUANTITY	INITIALS/SYMBOL	TREAD COLOR	PLACEMENT	UNIT PRICE	TOTAL

FABRIC SWATCHES

STAPLE FABRIC SWATCHES HERE

- FOR • CHOIR GOWN
• CHOIR GOWN
TRIM COLOR
• STOLE OR TUNIC
• SECOND COLOR
FOR STOLE OR
TUNIC
IF REVERSIBLE

Speedship ITEMS

A-500's SPEEDSHIP PULPIT ROBES

QUANTITY	STYLE	SIZE	◀ A-500'S - SIZES AVAILABLE:			
	A501		Size and Robe Length	Height	Chest	Sleeve
	A502		S -53	5'3"-5'8"	(38-40)	33
	A503		M-57	5'9"-6'	(42-44)	34
	A504		L -61	6'-6'6"	(44-46)	35
	A505					
	A506					
	A508					
	A509					
	A510B					
	A510W					

SPEEDSHIP CHOIR GOWNS

QUANTITY	COLOR	SIZE:
		Junior-Up to 5'
		Small-5'1" to 5'3"
		Medium-5'4" to 5'9"
		Large-5'10" to 6'3"
		Ex Large-6'4" and taller

MINISTER'S BAPTISMAL GOWN NR650

QUANTITY	SIZE	SLEEVE	LENGTH
	NR650S Small Short	32"	51"
	NR651S Small Long	33"	53"
	NR652M Med. Short	33"	55"
	NR653M Med. Long	34"	57"
	NR655L Large Short	34"	59"
	NR655L Large Long	35"	61"

ADULT CANDIDATES BAPTISMAL GOWN NGB249

QUANTITY	SIZE:
	Junior-Up to 5'
	Small-5'1" to 5'3"
	Medium-5'4" to 5'9"
	Large-5'10" to 6'3"
	Ex Large-6'4" and taller

CHILDREN'S BAPTISMAL GOWNS NGB249-C

QUANTITY	SIZE
	8
	10
	12
	14

ACCESSORIES

- ☐ Hangers ☐ Gloves-Men
☐ AHS-23 Collar ☐ Bell Ringer
☐ Gloves-Woven ☐ Stoles

AHS-1P STOLES

- ☐ Red/White ☐ Gold/White
☐ Purple/Green ☐ with Cross
☐ Gold/White

GARMENT BAGS

- ☐ B2 Black Vinyl
☐ B3 Clear Plastic

Abbott Hall CHOIR GOWNS
Trademark of the Finest Quality

CUT HERE